



**Valley-Wide**  
Health Systems, Inc.

*Your Health, Our Priority!*

## LEADERSHIP

### President/Chief Executive Officer

Jania Arnoldi, PhD, MBA

### Chief Operations Officer

Kristina Daniel, LPC, LAC

### Chief Medical Officer

Emelin Martinez, FNP-BC

### Chief Dental Officer

Stacey Robben, DDS

### Chief Behavioral Health Officer

Kristina Daniel, LPC, LAC

### Chief Financial Officer

Javier Martinez

### Chief Information Officer

Larry Helms, CHCIO

### Chief Administrative Officer/

### Legal Counsel

Nick Sarmiento

### Chief Human Resources Officer

Regana Davis

### Director of Executive Support

Krista Martinez

## BOARD OF DIRECTORS

### Chair

Celina Espinoza

### Vice Chair

Matthew Martinez

### Treasurer

Jeremy Silva

### Secretary

Linda L. DeHerrera

### Member

Frances Valdez

### Member

Michelle Ballantyne

### Member

Alondra Maldonado

### Member

Patricia Freda

### Member

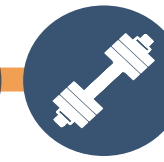
Michelle Ferrera

### Member

Sandra Lundquist

### Member

Jennifer Pollmiller



## 2022 ANNUAL REPORT

Dear Valley-Wide Friends and Community Partners,

What an exciting year 2022 has been. We have expanded services and service lines in all of our areas. We touched more patients than we ever have with an increase of 6% in patients, we hit over 15,000 rides with our Valley-Wide Ride Program, and we announced a merger with a Community Mental Health Center partner, Southeast Health Group. Our teams and staff are amazing and we could not do all of this without them.



Through our strategic plan we continued to focus on building strong teams to provide innovative whole-person health for all. Our culture evolution and employer of choice teams continued to work on employee programs, our model of care and patient experience teams are bringing improvements and innovation to the way we deliver services, our quality team is ensuring our patients get THE BEST CARE, and our sustainability team is implementing new programs that support the long-term success of Valley-Wide.

Our focus for 2023, will be to bring our new team members, gained from the merger, fully into Valley-Wide. We will then work to fully integrate all of the new programs into our communities and services. We are excited about the opportunities ahead of us and we plan to continue moving forward, growing, and offering the best healthcare services for all individuals and families in the communities we serve.

Sincerely,

Jania Arnoldi, PhD, MBA  
President/Chief Executive Officer

## About Us

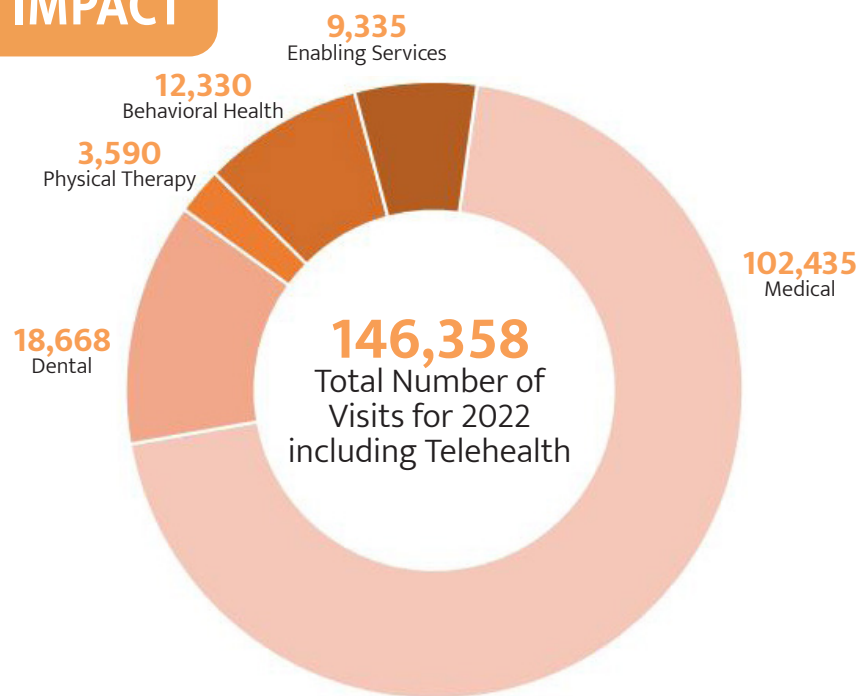
Valley-Wide is a private non-profit 501(c)(3) corporation governed by a volunteer community board. Established in 1976, Valley-Wide has fifteen primary health care delivery sites strategically located throughout rural counties in Southern Colorado. These full-service clinics, including integrated behavioral health services, are complemented by nine dental clinics, four physical therapy clinics, a school-based health clinic, an outpatient behavioral health clinic, and numerous ancillary health services to serve the needs of patients in our communities.

Valley-Wide serves patients of all ages through a family practice focus approach. Emphasis is placed on assisting the patient by reducing barriers such as cost, culture, language, literacy, and transportation that may hinder access to appropriate health care services.

## Our Mission

Valley-Wide Health Systems is committed to providing high-quality, safe, effective and integrated health care services in a respectful and inclusive manner for all with special consideration for medically underserved populations.

## COMMUNITY IMPACT



### GENDER



Female: 20,600  
Male: 17,002

### AGE



Pediatric (0-16): 8,148  
Adult (17-64): 22,015  
Senior (65+): 7,439

### ETHNICITY



Hispanic: 16,340  
Non-Hispanic: 17,252  
Not Reported: 4,010

### PAYER MIX



Medicaid/CHIP: 17,415  
Medicare: 6,542  
Private: 10,211  
Uninsured: 3,434