



Valley-Wide
Health Systems, Inc.

Your Health, Our Priority!

2024 ANNUAL REPORT

valley-widehealth.org

• 1-833-350-1113



MESSAGE FROM OUR CEO

"We continue to focus on building strong teams to provide innovative whole-person health for all, to ensure that our patients get THE BEST CARE."



Dear Valley-Wide Friends and Community Partners,

The year of 2024 and the start of 2025 have been very exciting. We continue our work to expand services and ensure that our services align with the community's needs. During 2024 we served 35,907 patients through 142,872 visits. In addition, we have provided just under 30,000 rides for patients to medical appointments and/or social needs through our Valley-Wide Ride Program since 2020. Our new model with full behavioral health services has provided new services and service areas to the Valley-Wide scope of services. We also purchased and started the remodel of the new Valley-Wide Health and Wellness Center, the prior Alamosa Courthouse. This 19,000-square-foot facility will house medical, behavioral health, and physical therapy in a newly remodeled state-of-the-art facility. We will be opening this new facility in the last quarter of 2025.

We also completed revamping our strategic plan. Our new strategic plan will focus our efforts on three priority areas: Our Staff, Our Patients, and Our Future. Through our strategic plan, we continued to focus on building strong teams to provide innovative whole-person health for all, to ensure that our patients get THE BEST CARE, and to make sure Valley-Wide is sustainable and able to meet the needs of our communities.

Our focus for the remainder of 2025 and into 2026 will be to integrate services in the new Valley-Wide Health and Wellness Campus, continue to work to hire and engage a workforce that is focused on our patients, and ensure we are offering quality healthcare services to our patients. We are excited about the opportunities ahead of us and we plan to continue moving forward, growing, and meeting the needs of the communities we serve.

With gratitude,

Jania Arnoldi

Jania Arnoldi, DHA, MBA
President/CEO



Join us in our mission to continue and expand access to high-quality healthcare services for those who need it most, and consider donating today!



SCAN HERE

WHO ARE WE?

Valley-Wide is a non-profit, Federally Qualified Health Center (FQHC) providing premier primary and preventive care at 34 service sites strategically located throughout 14 rural counties covering over 31,000 square land miles.

OUR SERVICES



Medical



Dental



Behavioral
Health



Pharmacy



Physical
Therapy



Virtual &
Telehealth
Visits



Crisis

EXECUTIVE LEADERSHIP TEAM

Jania Arnoldi, DHA, MBA
President/Chief Executive Officer

Kristina Daniel, LPC, LAC, ADS, MBA
Chief Operating Officer

Javier Martinez
Chief Financial Officer

Larry Helms, CHCIO
Chief Information Officer

Regana Davis, MBA, SPHR, SHRM-SCP
Chief Human Resources Officer

Emelin Martinez, FNP-BC, MSN
Chief Medical Officer

Laura DiPrince, MS, LPC, NCC, ADS
Chief Behavioral Health Officer

Stacey Robben, DDS
Chief Dental Officer

Nick Sarmiento, ESQ.
Chief Administrative Officer/Legal Counsel

BOARD OF DIRECTORS

Jeremy Silva, Chair
Social Service Director

Celina Espinoza, Vice Chair
K-12 Education Counselor

Michelle Velasquez, Secretary
Master Tax Advisor

Trevor La Cost, Treasurer
Arkansas Valley Diesel Service, Inc.

Linda L. DeHerrera, Member
County Land Use Administrator

Alondra Maldonado, Member
Administrative Assistant

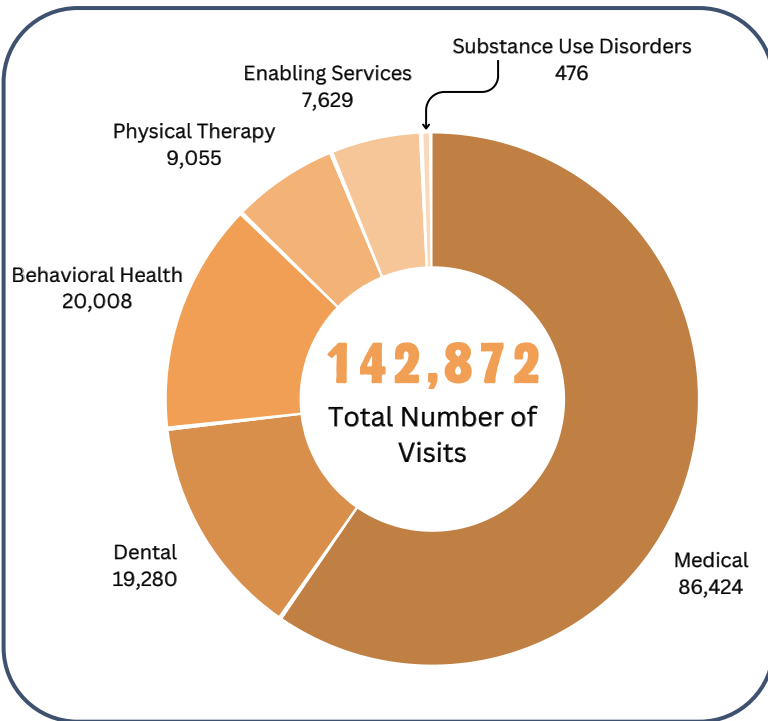
Tom Case, Member
Case Land & Cattle

Michelle Ferrera, Member
Child Welfare and Adult Protection Supervisor

Raul Ramos, Member
Farm Manager

Matthew Martinez, Member
State Representative

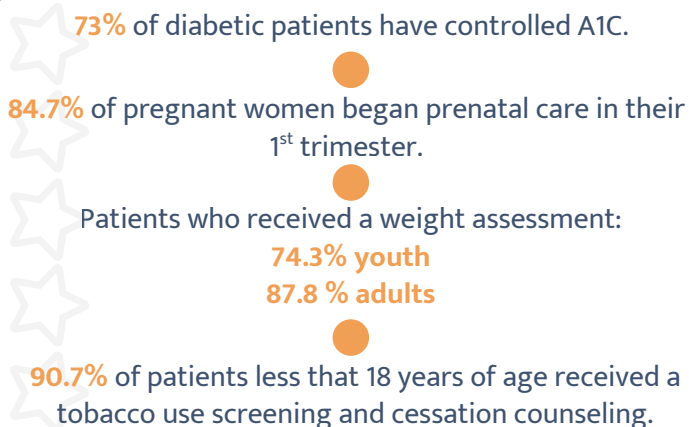
SERVICES PROVIDED



VALLEY-WIDE RIDE

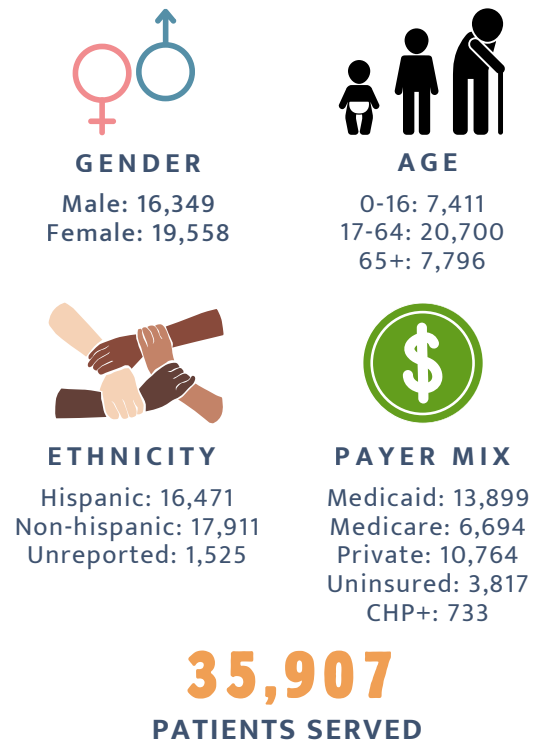


QUALITY CARE



COMMUNITY IMPACT

PATIENT BREAKDOWN



PEER SERVICES



PHARMACY

